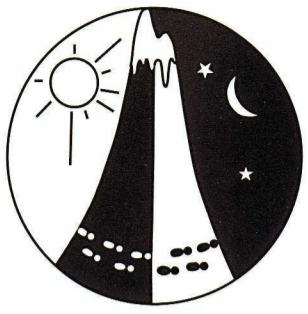


The Munda Biddi Rogaine

Incorporating the 2005 Paddy Pallin Junior Cadet Challenge

Autumn 12 Hour Rogaine 23 April 2005

Western Australian Rogaining Association, PO Box 1201, Subiaco, WA, 6904



Setters and Veters

Owen Horton
Brian Wade
Dale Clemons
Lorraine Clemons

Thanks and appreciation to:

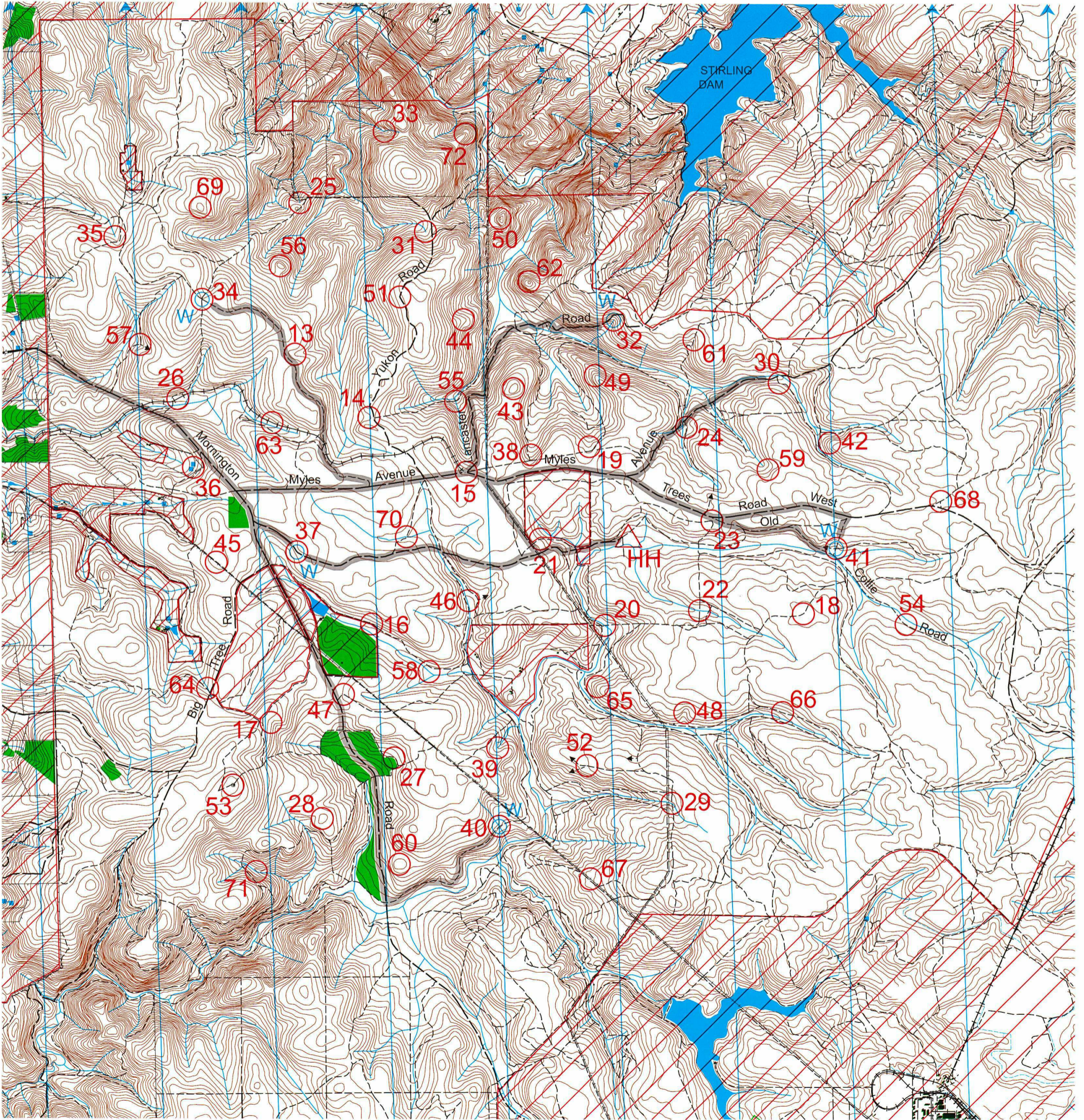
K & E Anderson
M & G Chambers
I & R Staples
Worsley Alumina JV
Chris Gilbert of CALM



LEGEND

- Buildings/Fixed Objects
- Continuations
- Control
- Contours
- Dams
- Fences
- Power Line
- Hash House
- Magnetic North Line
- Out of Bounds
- Road, Sealed
- Road, Major Gravel
- Track
- Watercourse
- Water Drop
- Plantation
- Patrolled Road
- Rail Formation

Paddy Pallin



This map was produced using OCAD 8 by the Western Australian Rogaining Association, wa.rogaine.asn.au.
Data supplied by DOLA and used under copy licence 393/93. Possession of this map does not give right of entry to this area.

SCALE 1:50,000, 5 metre contour interval



THE MUNDA BIDDI ROGAINE incorporating THE PADDY PALLIN JUNIOR CADET CHALLENGE

WARA Autumn 12 Hour Rogaine 23 April 2005

No.	Description	Points	No.	Description	Points	Important Information
13	The gully, broad	20	43	The knoll, broad	60	
14	The gully, head of	20	44	The spur	60	Control Cards
15	The track junction, 100m @ 180 degrees	20	45	Pole 103, 60m @ 230 degrees	60	From 0700 Saturday
16	The track bend/fence corner	20	46	The creek	60	
17	The gully, broad	20	47	The track bend, 100m @ 60 degrees	60	Briefing
18	The track bend	20	48	The gully, broad	60	0945 Saturday
19	The gully, head of	30	49	The spur	70	Start
20	The track/creek crossing, 90m @ 350 degrees, on a man-made object	30	50	The knoll	70	1000 Saturday
21	The track bend, 10m @ 180 degrees	30	51	The track bend, 50m @ 270 degrees	70	Finish
22	The track/creek crossing, 45m @ 180 degrees	30	52	The indistinct track junction	70	2200 Saturday
23	The southern track junction	30	53	The communications tower, SW corner	70	
24	The track bend	30	54	The track bend	70	Hash House
25	The gully, head of	40	55	The creek/track intersection	80	Opens 1600 Saturday
26	The formation	40	56	The knoll	80	Closes 2300 Saturday
27	Vegetation boundary	40	57	The track junction	80	Opens 0630 Sunday
28	The knoll, broad	40	58	A bend in the northern watercourse	80	Closes 0800 Sunday
29	The creek/track crossing	40	59	The gully, broad, head of	80	Sunset
30	The western bend on the southern track	40	60	The knoll, broad	80	1745 Saturday
31	The gully, head of	50	61	The watercourse, broad, on the track	90	Moonrise
32	The gully, head of (Water Drop)	50	62	The knoll, northern edge	90	1706 Saturday
33	The creek bend	50	63	The formation	90	
34	The track junction, 30m @ 220 degrees (Water Drop)	50	64	The gully, broad	90	Controls Used
35	The gully, broad, head of	50	65	The spur, broad	90	60
36	In between the dams	50	66	A fallen log across the track	90	
37	The track bend, 50m @ 230 degrees (Water Drop)	50	67	Pole 123, 50m @ 210 degrees	100	Total Points
38	The gully, broad	50	68	The north-eastern track junction	100	3540
39	The gully, broad	50	69	The summit, broad	100	Water Drops
40	The creek/track crossing (Water Drop)	50	70	The track/creek crossing	100	Control #32
41	The indistinct track junction (Water Drop)	50	71	The creek bend	100	Control #34
42	The broad spur	50	72	The spur	100	Control #37
						Control #40
	Patrolled Roads (Marked in grey on map)			Patrolled Roads (Marked in grey on map)		Control #41
	Mornington Road			Loop including Trees Road West and Old Collie Road		
	Myles Avenue to Control #30			via Control #41		Junior Cadet Challenge
	Lancaster Road to Control #32			NW Track to Control #34		teams must report back
	Track between Hash and Mornington Road past Control #37			NE Track to Control #40		to Admin by 4pm